



## V-locity® 6.1 Installation Guide

### Contents

V-locity Architecture Overview and System Requirements.....	2
Install V-locity without VMC management.....	2
Install V-locity with VMC management .....	5
Deploy V-locity using Third-Party Deployment Tools .....	6
Appendix .....	7

## V-locity Architecture Overview and System Requirements

With the introduction of V-locity 6.1, you can now install and manage V-locity without the V-locity Management Console (VMC). In previous versions (v5.x and v6.0), the VMC was required as it was the only interface to the V-locity product. With V-locity 6.1, each installation has its own local GUI to manage the product. The VMC is still available as an additional interface to the product if you want a central console to manage many deployments of V-locity. For more details on the VMC, please see the VMC Installation Guide.

V-locity supports the following Windows operating systems:

- Windows 7, 8, 8.1, 10
- Windows Server 2008 R2 and 2012 / 2012 R2

Minimum System Requirements for Caching capability:

- At least 3 GB of physical memory (4 GB recommended)
- Enough free space on the installation volume for IntelliMemory technology metadata files (approximately .025% of the total space of all disks attached to the target system).

There are three methods to install V-locity directly on a system without deploying from VMC. Each method is detailed below.

1. Install via VLEngishV-locity.exe when you will not be using VMC to manage your V-locity installations
2. Install via VMCENSetup.exe when you will be using VMC to manage your V-locity installations
3. Install via setup.exe when using third-party deployment tools

## Install V-locity without VMC management

### Step 1

To obtain the standalone V-locity installation package, go to [www.conduktiv.com/account](http://www.conduktiv.com/account), log in to your account and download V-locity 6.1 (**VLEngishV-locity.exe**) and a valid license. In some cases, the installation package will already include the license file.

If you have a separate license file, and you wish to add the license automatically during setup, copy both the installer package and the license file to the same folder on the system where you plan to install V-locity.

If you wish to add a license after V-locity has been installed on a system, you can do so by placing the license file in **Program Files\Conduktiv Technologies\V-locity**, opening V-locity using the shortcut on the Start Menu, clicking on **Manage V-locity License** in the menu on the right side of the screen, and clicking **Add/Update License**.

## Step 2

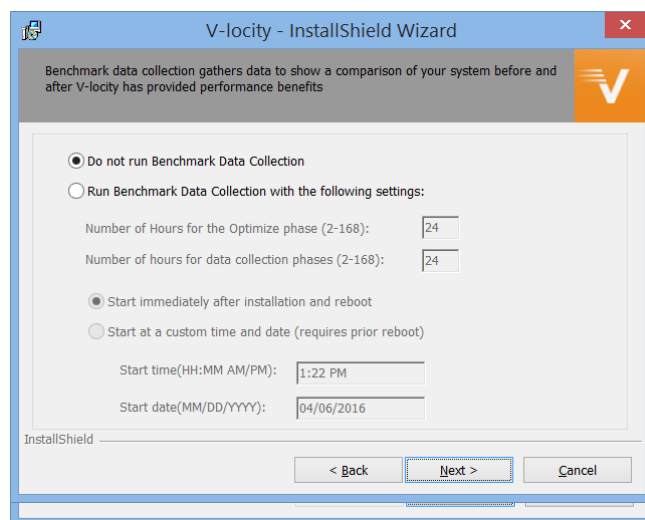
Double-click the “**VLEngishV-locity.exe**” file. The installation files will be extracted, and the installation wizard will automatically start. Click the “**Next**” button to proceed with the installation.

## Step 3

V-locity gives you the option to run a Benchmark Data Collection. The purpose of this is to gather data that shows a comparison of your system(s) before V-locity has provided performance benefits and after V-locity has provided performance benefits. The optimal time to run a Benchmark Data Collection is during normal work-days so that a benchmark of real performance can be established.

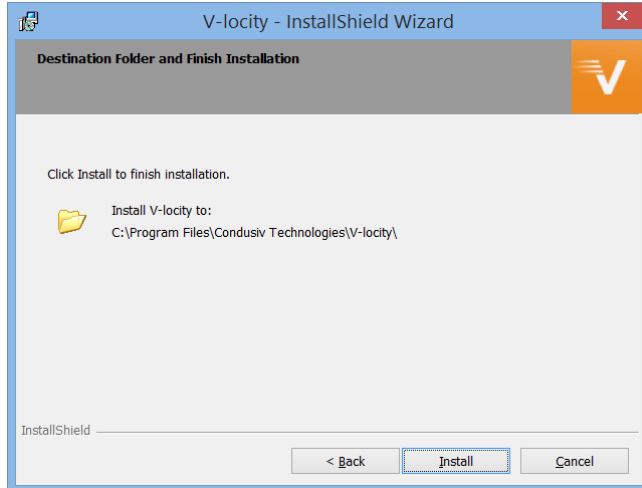
Use the following controls to define the Benchmark Data Collection settings:

- Do not run the Benchmark Data Collection
  - Run the Benchmark Data Collection
    - Select the number of hours per each phase (Default is 24 hours)
    - Start the Benchmark Data Collection upon first reboot after installation
- Or
- Start the Benchmark Data Collection at a specified time after the installation reboot



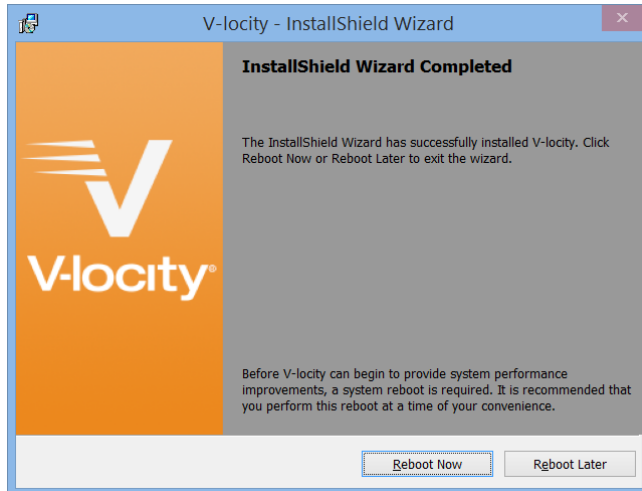
#### Step 4 – Start the installation

Select Install to start the installation process.



#### Step 5 – Complete Installation

To complete the installation, a reboot is required. You can do it now or later.



## Install V-locity with VMC management

V-locity can be installed and instructed to connect to an existing VMC (V-locity Management Console).

To install V-locity and make the connection to a VMC server with a single command, use the **VMCENSetup.exe** installer located at the following location on the Master Node (the system where you installed the VMC):

**C:\Program Files\ConduSiv Technologies\V-locity VMC\V-locity\Installs**

When installing V-locity stand-alone with VMCENSetup.exe, a dial-home component of V-locity requires some information about the home server (where the VMC is installed):

- Home server (Master Node) DNS name (FQDN) or IP address

This required information is passed as a parameter to VMCENSetup.exe. The installer then writes it as a text file stored at (C:\Program Files\ConduSiv Technologies\V-locity\DialHomeInfo.txt).

A typical parameter string would look like the following:

**“HomeName:vmc.my.domain”**

Where “vmc.my.domain” would be the DNS resolvable name where the VMC Master is installed. This is used by the software to send a notification that the product has been installed on the target system (end-node).

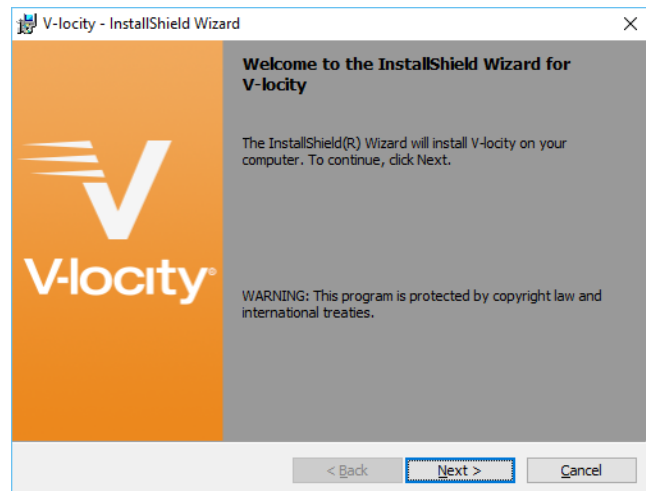
\* A table of all available **dial-home parameters** is listed in the appendix section of this document.

## Deploy V-locity using Third-Party Deployment Tools

V-locity can be deployed to systems in your environment using third-party deployment tools (such as SCCM) without connecting back to the VMC.

To deploy V-locity using a third-party deployment tool, you will first need to extract the specific platform (X86 or x64) setup.exe from the VLEngishV-locity.exe installation package. To obtain the installation package, go to [www.condusiv.com/account](http://www.condusiv.com/account), log in to your account and download V-locity 6.1 (**VLEngishV-locity.exe**) and a valid license. In some cases, the installation package will already include the license file.

1. Run VLEngishV-locity.exe.  
This will extract the files needed for third-party deployment to the current folder. By default, you will be prompted to begin the installation, but you can cancel the installation when you see the initial setup screen (pictured here) since the file extraction is now complete.



2. In the same folder that VLEngishV-locity.exe resides, you will now see two new subfolders, \x86 and \x64. Within each subfolder, you will find a setup.exe for the respective 32bit and 64bit platforms.
3. If you have a separate license file, and you wish to add the license automatically during deployment, you will need to include both setup.exe and the license file in your deployment. The two files should be placed into the same folder on the target systems in order to automatically license the installation during setup.

If you wish to add a license after V-locity has been installed on a system, you can do so on the target system by placing the license file in **Program Files\ConduSiv Technologies\V-locity**, opening V-locity using the shortcut on the Start Menu, clicking on **Manage V-locity License** in the menu on the right side of the screen, and clicking **Add/Update License**.

\* A table of available **setup parameters** is listed in the appendix section of this document.

## Appendix

### Dial-home Parameters

As described earlier in this document, V-locity can be deployed to systems in your environment and automatically tied to an existing VMC server (using **VMCENSetup.exe**). The following dial-home parameters are available when installing V-locity using this method.

Parameter	Shortened	Description	Default
HomeName	HN	Home server's FQDN or IP address – Set this parameter to identify the system that is running the VMC. (This parameter is required)	
HomePort	HP	Home server's TCP/IP port – If the port used by the VMC is not the default port, set this parameter to identify the port you are using. (This parameter is not required if you are using the default port on the Master Node)	443
HomeSSL	HS	Home server's SSL configuration – Related to the HomePort. Enables or disables the secure socket layer protocol for that port. (This parameter is not required if you are using the default Secure Socket setting on the Master Node)	Y
SystemName	SN	System's FQDN or IP address – Set this parameter to specify the name of the target system to which you are deploying V-locity if the FQDN of this system locally is not available to the VMC Master via an LDAP scan. (This parameter is optional)	
AgentPort	AP	Agent's TCP/IP port – If the port used by the end node is not the default port, set this parameter to identify the port you are using. (This parameter is not required if you are using the default port on the end node)	13568
AgentSSL	AS	Agent's SSL configuration – Related to the AgentPort. Enables or disables the secure socket layer protocol for that port. (This parameter is not required if you are using the default Secure Socket setting on the end node)	Y
StartupMode	SM	V-locity Startup mode (Normal or Paused) – Set this parameter to start V-locity in one of two states. When set to "Normal", V-locity will start immediately after first reboot and initiate a Benchmark Data Collection. When set to	Normal

		“Paused”, V-locity will not start immediately after first reboot. (This parameter is optional)	
BAPhase1	BA1	Benchmark analysis phase 1 (pre) – Set this parameter to define the amount of time, between 0 and 168 hours, you would like an automatic Benchmark Data Collection to wait before starting. (This parameter is optional)	0
BAPhase2	BA2	Benchmark analysis phase 2 (analysis) – Set this parameter to define the amount of time, between 2 and 168 hours, you would like the “before V-locity benefits” analysis phase of an automatic Benchmark Data Collection to take. (This parameter is optional)	24
BAPhase3	BA3	Benchmark analysis phase 3 (optimize) – Set this parameter to define the amount of time, between 2 and 168 hours, you would like the improvement implementation phase of an automatic Benchmark Data Collection to take. (This parameter is optional)	24
BAPhase4	BA4	Benchmark analysis phase 4 (post) – Set this parameter to define the amount of time, between 2 and 168 hours, you would like the “after V-locity benefits” analysis phase of an automatic Benchmark Data Collection to take. (This parameter is optional)	24

A string using all of the available parameters would look like the following:

“HomeName:vmc.master.fqdn, HomePort:(*port number or blank if default*), HomeSSL:(*Y or N – default=N*), SystemName:my.endnode.dnsname.to.use, AgentPort:(*port number*), AgentSSL:(*Y or N*)”

A shortened version of each parameter may be used when creating a string to pass in a third-party deployment tool. Use the information in the table above to identify the shortened version of the parameter you wish to use.

An example of a shortened parameter string using all of the available parameters would look like the following:

HN:vmc.master,HP:1234,HS:N,SN:mynode.domain,AP:2345,AS:N



## Setup Parameters

As described earlier in this document, V-locity can be deployed to systems in your environment using third-party deployment tools (such as SCCM) by extracting the **setup.exe** file. When using this method, there are several command-line parameters needed for a silent install.

Switch	Description
/s	Setup extraction occurs silently
/v	Specify additional MSI arguments (arguments enclosed in quotes)
/qn	MSI argument for UI level - no UI (enclosed in quotes)

The following example will install V-locity silently:

```
setup.exe /s /v" /qn"
```

NOTE: V-locity installation requires a reboot before benefits will be realized. A silent install will not include an automatic reboot.

© 2016 Conduvis Technologies Corporation. All Rights Reserved. Conduvis and V-locity are trademarks or registered trademarks of Conduvis Technologies Corporation in the United States and other countries.

Microsoft and System Center Configuration Manager (SCCM) are either registered trademarks or trademarks owned by Microsoft Corporation in the United States and/or other countries.  
All other trademarks are the property of their respective owners.